

# BioArtFeed

## Decapsulated Artemia cysts

BioArtFeed consists of high quality dehydrated decapsulated *Artemia* cysts. This sustainable, natural feed is a highly nutritious source of protein and fat which helps establish and enhance larger and more stable populations of predatory insects and mites, early in the season when pollen might not yet be available and at low pest densities.

### SUPPORTED BENEFICIALS

#### Predatory mites (Phytoseiidae)

*Amblyseius swirskii*  
*Amblyseius mondorensis*  
*Amblyseius limonicus*  
*Neoseiulus cucumeris*.

#### Orius pirate bugs (Anthoridae)

*Orius laevigatus*  
*Orius insidiosus*  
*Orius majusculus*  
*Orius thripoborus*  
*Orius naivashae*.

#### Mirid bugs (Miridae)

*Macrolophus pygmeus*  
*Nesidiocoris tenuis*

#### Green lacewings (Chrysopidae)

*Chrysoperla rufilabris*  
*Chrysoperla sp.*

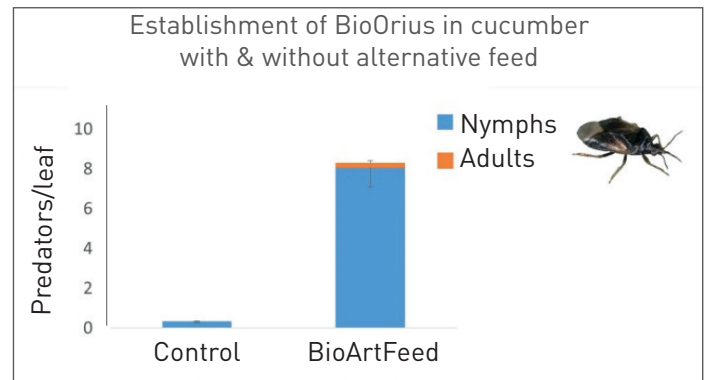


### DESCRIPTION

*Artemia* is a genus of aquatic crustaceans, also known as brine shrimp. *Artemia* eggs, also known as cysts, are pale brown to dark brown in color.

The production processes, produce a higher quality feed per gram, thus reducing application quantities. They are completely digestible by predatory insects and predatory mites.

BioArtFeed is a sustainable, natural, highly nutritious source of protein and fat for a wide range of beneficial predators.



### PRODUCT



- Shaker containing 200 grams.
- Tin can containing 300 gr.
- Plastic container containing 1kg.
- Also available with the beneficial: Orius Combo & Swirski Combo

### ADVANTAGES

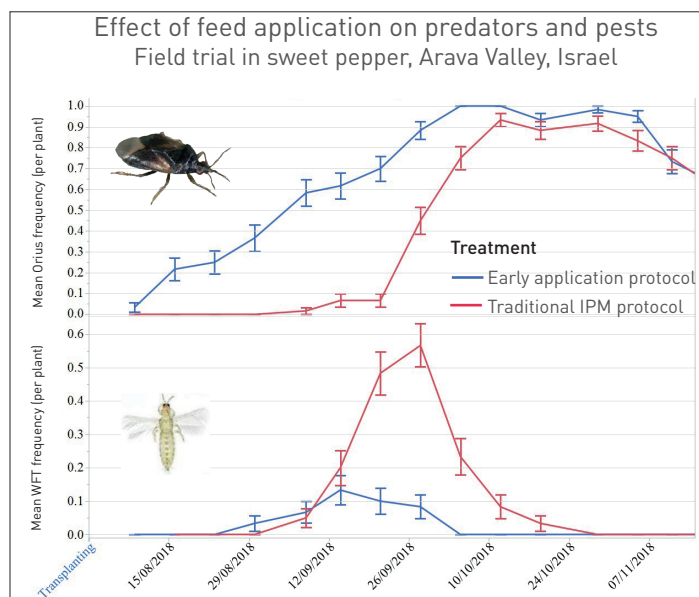
- Produced from cysts of the highest grade in a proprietary process, it is a unique artemia product, highly concentrated and thus reducing application rates.
- Being a dry product, BioArtFeed has a long shelf life and is tolerant to gaps in the cooling chain.
- Long durability post application (2-4 weeks).
- Does not require freezing.
- Allows establishment of predators regardless of pest or pollen availability.
- Accelerates the establishment of predators during the transition from cold to hot weather.





# BioArtFeed

*Decapsulated Artemia cysts*



BioOrius adult feeding on BioArtFeed



BioOrius nymphs feeding on BioArtFeed

## STORAGE

- If the feed cannot be applied immediately, the product should be stored in its original packaging, in a cool, dark place, at temperatures between 4°C and 8°C.
- Can be stored for at least 18 months from production date in originally sealed packaging, in the recommended conditions.

## APPLICATION & HANDLING

- Apply in any situation where the establishment of beneficial insect or predatory mite populations is desired.
- Disperse the BioArtFeed over the crop's leaf surface as close to the beneficial population as possible.
- **DO NOT EXPOSE TO DIRECT SUNLIGHT**
- This product contains shellfish, which may cause allergic reactions. Precautionary measures are recommended to prevent or reduce allergic reactions.

## RELEASE RATES AND TIMING

- Apply together with the first introduction of beneficial insects.
- The frequency and amount of the feed application is determined by the crop, environmental conditions, pest density and the flowering stage of the crop.
- Please consult with your BioBee Technical Representative for the most favorable strategy, correct amounts are adjusted to specific situations.



BioSwirski feeding on BioArtFeed

## GENERAL COMMENTS

Before combining BioArtFeed with any chemical pesticide in the crop, please consult your BioBee Technical Sales Representative.

## DISCLAIMER

The success of biological pest control is affected by the crops initial pest population (upon application of the product), weather conditions and chemical residue present in the crop, among other possible aggravating factors.