

BioMaculata

Coleomegilla maculata



BioMaculata (*Coleomegilla maculata*), also called the pink spotted or twelve-spotted ladybeetle, is a voracious predator of aphids and many other pests, both as larvae and adults. It can also complete its development on some plant pollens in the absence of prey.

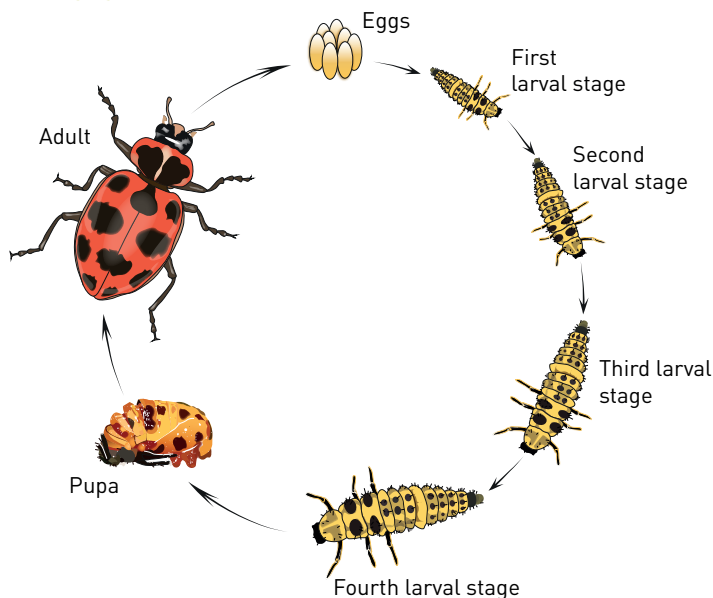


Aphids

DESCRIPTION

C. maculata eggs are oval and yellow to orange. The larvae are dark gray to black with yellow stripes on abdominal segments 4, 7, and 8. Adult beetles are oblong and somewhat flattened, bright red to pink and black. The pronotum has two black triangular spots and six spots on each forewing.

LIFE CYCLE



Female beetles lay yellow to orange oval eggs in clusters on leaves and stems. The eggs are deposited near prey, such as aphids. Eggs hatch larvae within 3-5 days. Larvae develop through 4 instars over a 2-3 weeks period before pupating. The larva attaches itself by the abdomen to a leaf or other surface to pupate. Adults emerge from the pupa within 3-5 days. Beetles overwinter as adults in leaf litter at the edges of forests.

TARGET PESTS

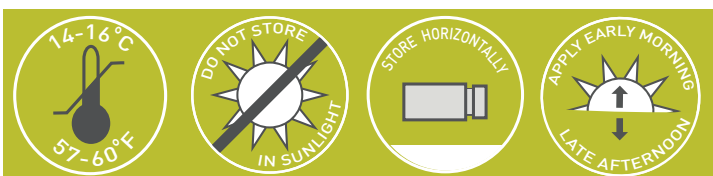
An important aphids predator of pea aphids (*Acyrtosiphon pisum*), green peach aphids (*Myzus persicae*), cotton aphids (*Aphis gossypii*), cabbage aphids (*Brevicoryne brassicae*), and potato aphids (*Macrosiphum euphorbiae*). BioMaculata can also prey on mites, whiteflies, eggs and larvae of important caterpillar and leaf beetle pests, including diamondback moth (*Plutella xylostella*) and Colorado potato beetle (*Leptinotarsa decemlineata*)

CROPS

For use on a wide range of vegetable, ornamental and field crops, including cannabis, strawberry, peppers, corn, alfalfa, potatoes and cucumbers.

PRODUCT

- 0.3-liter cylinder containing 250 adult beetles
- 1 liter cylinder containing 1K (adults or larvae)
- Cylinder containing 5K (adults or larvae)



BioMaculata



APPLICATION & HANDLING

- BioMaculata is shipped in aerated boxes. Packaging must be kept intact until placed in the greenhouse or field.
- Keep in a cool location until release.
- Gently rotate the cylinder to evenly mix the contents.
- The predators are released by removing the package's lid and either placing it adjacent to the pest infested spot or, while walking between the plants, tapping the package gently and letting the beetles fly out towards the plants
- Release beetles in the early morning or late in the afternoon, when temperatures are cooler.
- The beetles should be released within 24 hours of receipt.



STORAGE

Do not expose the product to direct sunlight.

- Store the product horizontally at a temperature of 14-16°C / 57-60°F.
- Do not break the cold chain throughout the transport and storage process.
- You may store the product for up to 24 hours.

DOSAGE

The amount and frequency of releases is determined by crop, the degree of infestation, weather conditions and damage inflicted on the crop. Additional quantities might be needed according to the infestation level and scouting information.

Consult with your BioBee representative.

MONITORING

Scouting and monitoring is crucial.



in some situations, biological pest control continues throughout the growing season, as successive generations of *C. maculata* continue to control the pest.

GENERAL COMMENTS

Before combining BioMaculata with any chemical pesticide in the crop, please consult your BioBee field representative.

DISCLAIMER

The success of biological pest control is affected by the crop's initial pest population (upon application of the product), weather conditions and chemical residue present in the crop, among other possible aggravating factors.