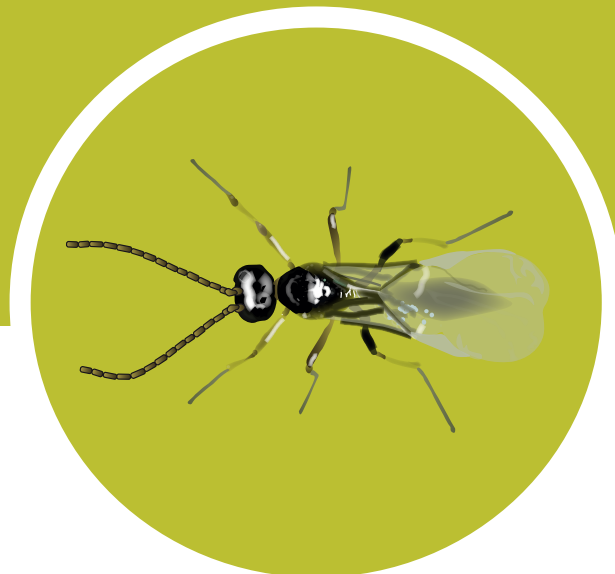




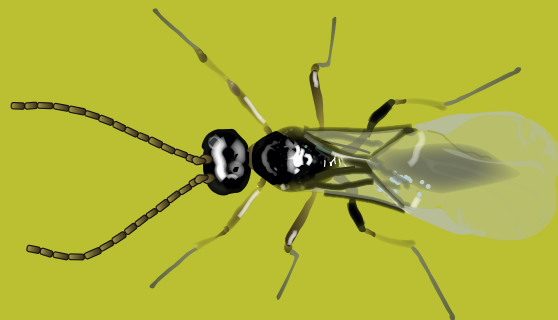
# BioAphidius

*Aphidius colemani*

Parasitic wasp for the control of over 40 aphid species



# BioAphidius



*Aphidius colemani* is a parasitic wasp that controls over 40 aphid species.

## TARGET PESTS

BioAphidius targets over 40 aphid species including green peach aphid (*Myzus persicae*), cotton aphid (*Aphis gossypii*), tobacco aphid (*M.p. nicotianae*) and cannabis aphid (*Phorodon cannabis*).



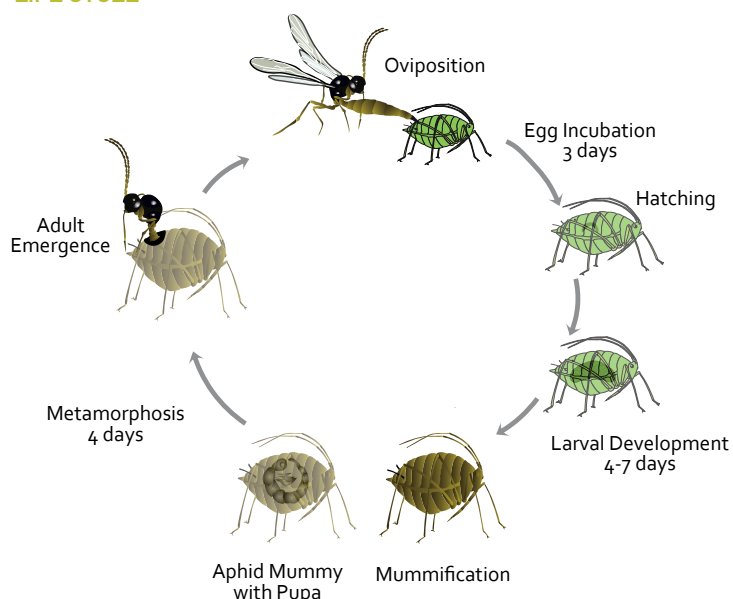
Indirect aphid damage

## DESCRIPTION

The adults are small slender wasps with black, brown and yellow coloration, brown legs and long antennae. *A. colemani* inserts one egg in the host aphid, which develops whilst feeding of the internal tissues of the host. *Aphidius colemani*'s size depends on the size of the parasitized aphid, but is usually about 2 mm long. *Aphidius colemani*'s activity is optimal between temperatures of 20-30°C. Below 15°C, there is a significant reduction in development rates. An adult female parasitoid may perform several hundred oviposition attempts during its lifespan and can parasitize up to 200 aphids.



## LIFE CYCLE



BioAphidius wasps feed on nectar and pollen and are most effective in crops with suitable flowering plants.

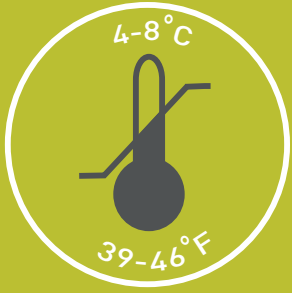
## CROPS

Cannabis, vegetables, field crops, greenhouse ornamentals, strawberries. It is often used in greenhouse production, but can also be used in open fields.

## THE PRODUCT

- BioAphidius is supplied as mummies containing the parasitoid's pupa. Thus, the product reaches its destination while "fresh" and its performance is enhanced.
- Each bottle contains 100/200/500 or 1,000 mummified aphids mixed in fine sawdust.
- At least 50% of the emerging adults are female.





## APPLICATION & HANDLING

- BioAphidius is shipped in temperature-controlled boxes which must be kept intact until reaching the end-user.
- Ants may interfere with parasitic wasps. If ants are present, treat the area before applying the wasps.
- Do not sprinkle the mummies actively from the container.
- Distribute by opening the bottle, allowing wasps to fly out in search of aphids.
- Place the bottle in the shade (under the plant canopy), near the infested plants. Bottles may also be emptied into D-Boxes and hung in the plant canopy.
- Keep the product at room temperature until the emergence has started. Do not refrigerate!
- **Do not expose the bottles to direct sunlight.**



## STORAGE

- BioAphidius may be stored for up to 48 hours, under recommended conditions.
- Store and transport in the original packaging, in a cool, dark place at temperatures between 4°- 8°C (39°-46°F).
- Store horizontally.

## MONITORING

Scouting and monitoring is crucial.



## DOSAGE

The amount and frequency of releases is determined by crop, degree of infestation, weather conditions and damage inflicted on the crop.

Repeat applications may be needed to achieve long-term control.

Biological pest control continues throughout the growing season, as successive generations of *Aphidius colemani* establish in the crop. The level of success can be evaluated within ten days after release by looking for parasitized aphids.

## GENERAL COMMENTS

Before combining BioAphidius with any chemical pesticide in the crop, please consult your BioBee technical advisory representative.

## DISCLAIMER

The success of biological pest control is affected by the crops initial pest population (upon application of the product), weather conditions and chemical residue present in the crop, among other possible aggravating factors.





## WE HAVE SOLUTIONS

### **BioBee Sde Eliyahu, Israel**

Tel No. +972 (0)15 345 1572

Email: [crm@biobee.com](mailto:crm@biobee.com)

[www.biobee.co.il](http://www.biobee.co.il)

### **BioBee USA**

Atlanta office 770-274-2412

Maryland office 410-572-4159

Email: [info@biobee.us](mailto:info@biobee.us)

[www.biobee.com](http://www.biobee.com)

### **BioBee South Africa (Pty) Ltd.**

Tel No. +27(0)15 345 1572

Email: [info@biobee.co.za](mailto:info@biobee.co.za)

[www.biobee.co.za](http://www.biobee.co.za)

### **BioBee Mexico S.A**

Tel No. +52 (1) 55 8019 7645

Email: [info@biobee.mex](mailto:info@biobee.mex)

[www.biobee.com](http://www.biobee.com)

### **BioBee Canada Inc.**

Tel No. +1(519)816-4678

Tel No. +1(289)442-5713

Email: [info@biobee-canada.com](mailto:info@biobee-canada.com)

[www.biobee.com](http://www.biobee.com)

### **BioBee Chile S.A**

Tel No. +56972888969

Email: [contactobbc@biobee.cl](mailto:contactobbc@biobee.cl)

[www.biobee.cl](http://www.biobee.cl)

