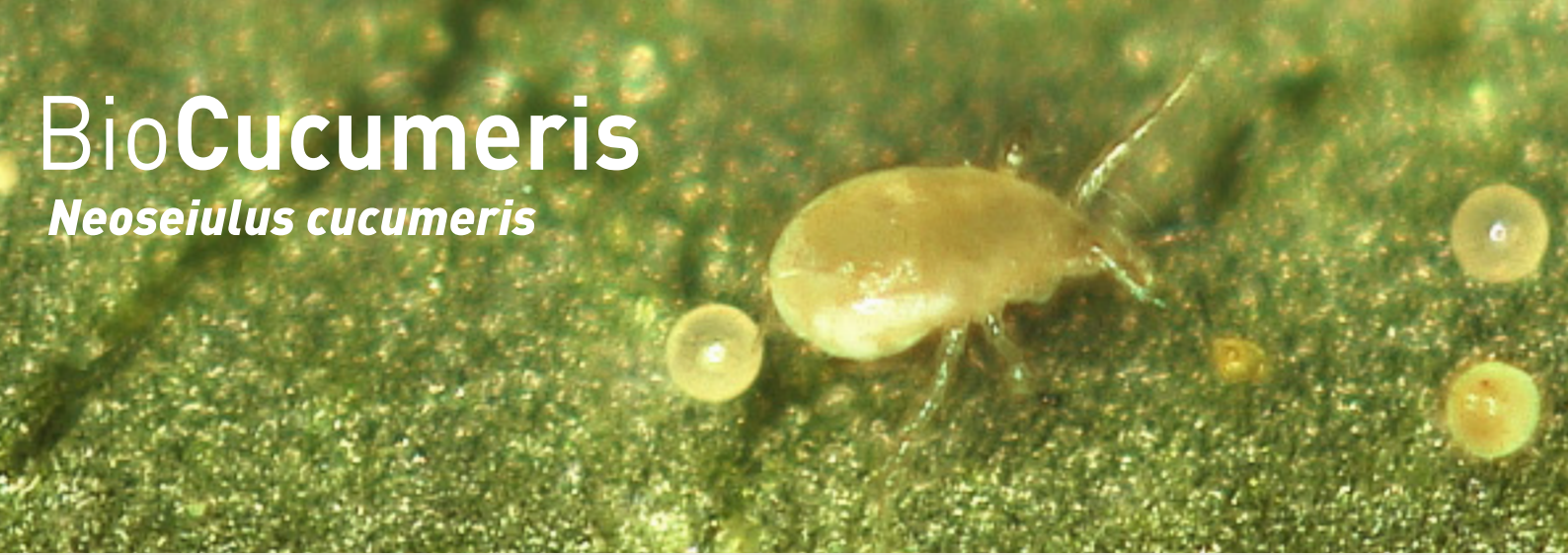
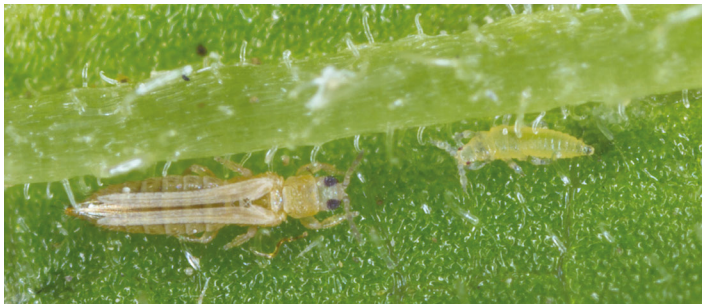


# BioCucumeris

## *Neoseiulus cucumeris*



BioCucumeris (*Neoseiulus cucumeris*) is a predatory mite that stands out for its broad host range and its ability to survive on plant pollen in the absence of prey.

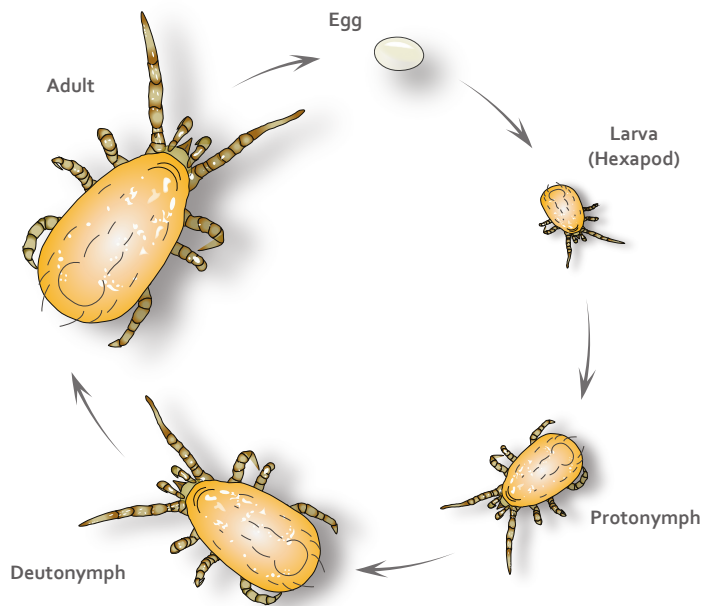


Thrips: adult and larva

### DESCRIPTION

This oblong shaped, soft-bodied mite is translucent pale brown to tan colored, depending on the food consumed. Its size may range between 0.5-1.0mm and is best viewed under 10X magnification.

### LIFE CYCLE



The life cycle of *N.cucumeris*, from egg to adult may be completed in 6 days at a temperature of 25°C although it might take longer if temperatures are lower than 20°C. The adult female lays the eggs on domatia or on hairs along the midrib on the underside of leaves, occasionally on petiole hairs.

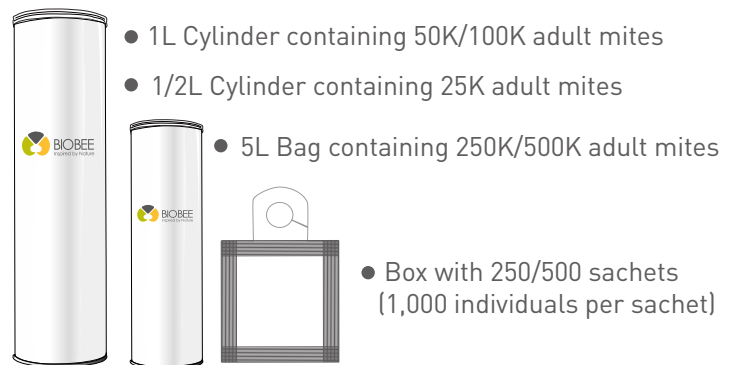
### TARGET PESTS

BioCucumeris is an aggressive predator of several soft-bodied pests, are known to feed on immature stages of western flower thrips (*Frankliniella occidentalis*), onion thrips (*Thrips tabaci*), melon thrips (*Thrips palmi*), common blossom thrips (*Frankliniella schultzei* Trybom), chilli thrips (*Scirtothrips dorsalis*), broad mite (*Polyphagotarsonemus latus*), cyclamen mite (*Phytonemus pallidus*), tomato russet mite (*Aculops lycopersici*) and spider mite.

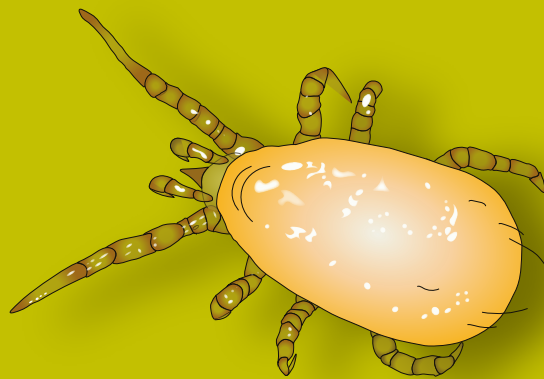
### CROPS

BioCucumeris can be used on a wide range of crops, such as cannabis, strawberry, pepper, ornamentals and cucumber.

### PRODUCT



# BioCucumeris



## APPLICATION & HANDLING

- BioCucumeris is shipped in aerated boxes. Packaging must be kept intact until placed in the greenhouse or field.
- Keep in a cool location until release.

## SACHET APPLICATION

- Hang the sachets within the canopy, at medium height and not in direct sunlight.

## CYLINDER APPLICATION

- Gently rotate the cylinder to evenly mix the contents.
- The mites are released by gently tapping the open cylinder over the plants while walking between the rows of the crops.

## STORAGE

Do not expose the cylinders or sachets to direct sunlight.

- Store the product horizontally at a temperature of 15-18°C / 59-64°F.
- Do not break the cold chain throughout the transport and storage process.
- You may store the product for up to 48 hours.



## ADVANTAGES

- Ideal for preventive use.
- Compatible and complementary with other predators and parasitoids.

## DOSAGE

The amount and frequency of releases is determined by crop, the degree of infestation, weather conditions and damage inflicted on the crop. Additional quantities might be needed according to the infestation level and scouting information.

Consult with your BioBee representative.

## MONITORING

Scouting and monitoring is crucial.



in some situations, biological pest control continues throughout the growing season, as successive generations of *N. cucumeris* continue to control the pest.

## GENERAL COMMENTS

Before combining BioCucumeris with any chemical pesticide in the crop, please consult your BioBee technical advisory representative.

## DISCLAIMER

The success of biological pest control is affected by the crop's initial pest population (upon application of the product), weather conditions and chemical residue present in the crop, among other possible aggravating factors.



**BIOBEE®**  
Inspired by Nature

Sde Eliyahu, Emek Hamaayanot 1081000, Israel | Tel: +972-4-6096905 | [crm@biobee.com](mailto:crm@biobee.com) | [www.biobee.com](http://www.biobee.com)