

BioAndersoni

Amblyseius andersoni

BioAndersoni (*Amblyseius andersoni*) is a predatory mite that feeds on various small arthropods.



Spider mite damage on strawberries



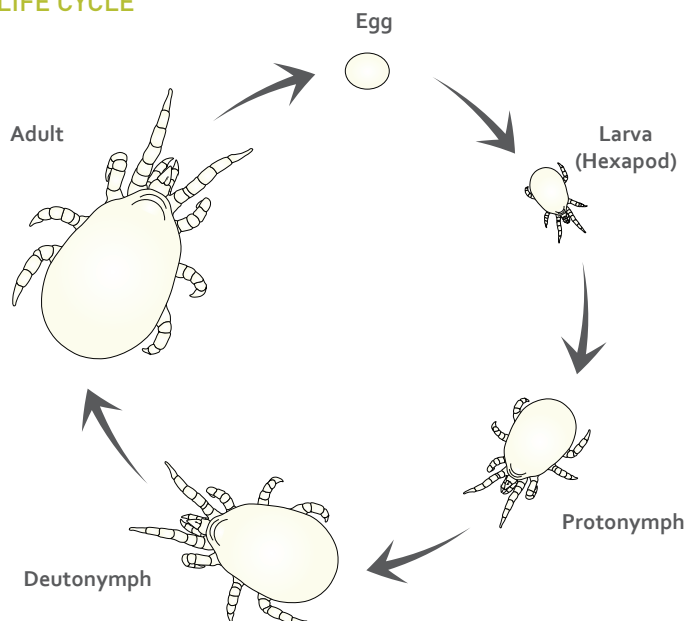
Thrips damage

DESCRIPTION

Less than 1mm in length, BioAndersoni can remain active at high temperatures (up to 100°F). It does not enter diapause while the climate and daylength is favorable and is effective even during short days, if temperature permits.

A. andersoni's characteristics make it ideal for the use in greenhouses.

LIFE CYCLE



TARGET PESTS

Two-spotted spider mite (*Tetranychus urticae*), carmine spider mite (*Tetranychus cinnabarinus*), citrus red mite (*Panonychus citri*), broad mite (*Polyphagotarsonemus latus*), cyclamen mite (*Phytonemus pallidus*) and suppression of russet mite (*Aculops lycopersici*/*Phyllocoptruta oleivora*/*Aculops cannibicola*) and western flower thrips (*Frankliniella occidentalis*).



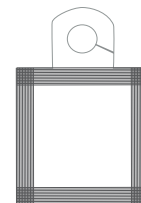
CROPS

Fruit trees, cannabis, ornamentals, vegetables, vines, strawberry, raspberry, blueberry and citrus.

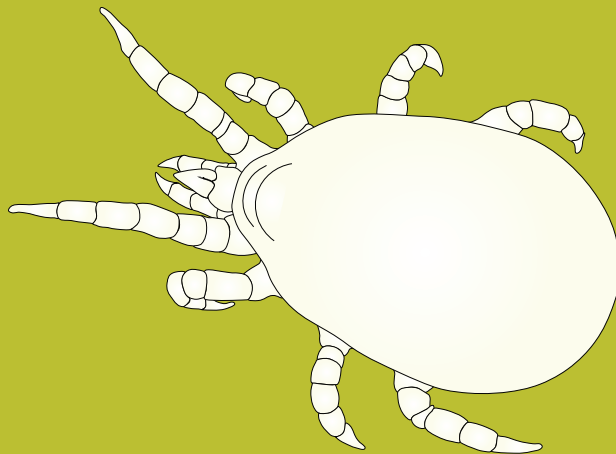
A. andersoni are often used in tomatoes due to their greater ability to navigate through trichomes.

THE PRODUCT

- Cylinder containing 50,000 predatory mites
- Bag containing 125,000 predatory mites
- Box of 250 sachets containing 62,000 predatory mites



BioAndersoni



APPLICATION & HANDLING

Apply BioAndersoni preventively or as soon as target pests are observed.

BioAndersoni is shipped in insulated, chilled boxes. Packaging must be kept intact until it reaches the end-user.

Cylinder application

- Gently rotate the cylinder, horizontally to achieve a homogeneous mix of the beneficial and the vermiculite.
- Release BioAndersoni evenly, throughout the crop, on the foliage, do not drop on the ground
- During hot days, releases should occur during early morning or late afternoon, when temperatures are milder.

Sachet application

- Hang directly into a well-formed axillary meristem at medium height or where flowering is present.

Do not expose the product to direct sunlight



STORAGE

- BioAndersoni may be stored for up to 24 hours, under recommended conditions.
- Store and transport in the original packaging, in a cool dark place at temperatures between 50°-57°F.
- Store the bottle horizontally

DOSAGE

The amount and frequency of releases is determined by crop, degree of infestation, weather conditions and damage inflicted on the crop. Additional quantities or repeated applications might be needed according to the infestation level and scouting information.

MONITORING

Scouting and monitoring is crucial.



Under certain conditions, biological pest control continues throughout the growing season, as successive generations of *Amblyseius andersoni* establish in the crop.

GENERAL COMMENTS

Before combining BioAndersoni with any chemical pesticide in the crop, please consult your BioBee technical advisory representative.

DISCLAIMER

The success of biological pest control is affected by the crop's initial pest population (upon application of the product), weather conditions and chemical residue present in the crop, among other possible aggravating factors.



BIOBEE®
Inspired by Nature

Sde Eliyahu, Emek Hamaayanot 1081000, Israel | Tel: +972-4-6096905 | crm@biobee.com | www.biobee.com