

BioAtheta

Atheta coriaria
(*Dalotia coriaria*)



Atheta coriaria (*Dalotia coriaria*) also known as the greenhouse rove beetle. This generalist predator is a fast-moving, soil-dwelling rove beetle.

TARGET PESTS

Fungus gnat larvae (*Sciaridae*), shore fly larvae (*Scatella stagnalis*), western flower thrips pupae (*Frankliniella occidentalis*) and other thrips species with a soil stage, springtails (*Collembola*), moth fly larvae and other small arthropods.

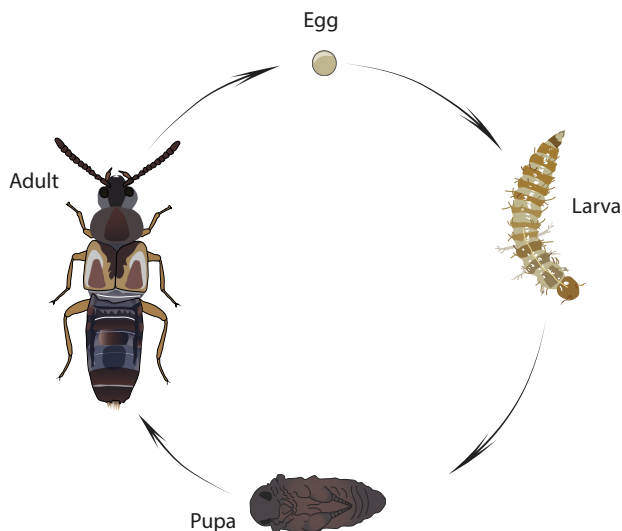


DESCRIPTION

While they are beetles, they do not quite look like beetles. The larvae are thin, pale yellow and darken in the later larval stages. Adults are light to dark brown in color, 3-4 mm long, winged beetles.

BioAtheta curve their abdomen upwards (like scorpions) and can run or fly when disturbed. Since they can actively fly, they rapidly colonize the release area. Both larvae and adults are aggressive predators.

LIFE CYCLE



CROPS

Vegetable crops, potted plants, bedding plants and medicinal cannabis in nurseries, greenhouses and open fields.



Fungus gnats

ADVANTAGES

- BioAtheta has aggressive feeding and high reproduction rates.
- Adults are highly mobile and disperse with ease over large distances while searching for food.
- Adults and larvae are attracted to decomposing organic material, where their prey is found.
- Prefer humidity between 50-80%, thus ideal for greenhouses and controlled environments.

THE PRODUCT

- Bottle containing 50/100 rove beetles
- Tube containing 500/1K rove beetles
- Gallon bucket containing 3K rove beetles
- Gallon bucket containing 3K mixed stages rove beetles



BioAtheta



APPLICATION & HANDLING

- BioAtheta is shipped in insulated, chilled boxes. Packaging must be kept intact until placed in the field.
- Keep in a cool location until release.
- The predatory beetles should be released as soon as possible.
- Release BioAtheta early morning or late afternoon, when the temperature is milder.
- Apply the rove beetles evenly on slightly damp growing mediums.
- Do not water the soil or the growing medium 10 minutes before and a few hours after the release.
- **Do not expose the bottles to direct sunlight.**

STORAGE

- BioAtheta can be stored for up to 24 hours if necessary, under recommended conditions.
- If the rove beetles cannot be immediately released, the containers must be stored in their original packaging, in a cool, dark place, at recommended temperatures, between 47-50°F (8°C-10°C).
- Store horizontally.

MONITORING

Scouting and monitoring is crucial.



Atheta coriaria Photograph by David R. Gillespie

DOSAGE

The amount and frequency of predatory rove beetle release is determined by crop, the degree of infestation, weather conditions and damage inflicted on the crop. Additional quantities might be needed according to the infestation level and scouting information.

GENERAL COMMENTS

Before combining BioAtheta with any chemical pesticide in the crop, please consult your BioBee representative.

DISCLAIMER

The success of biological pest control is affected by the crops initial pest population (upon application of the product), weather conditions and chemical residue present in the crop, among other possible aggravating factors.